

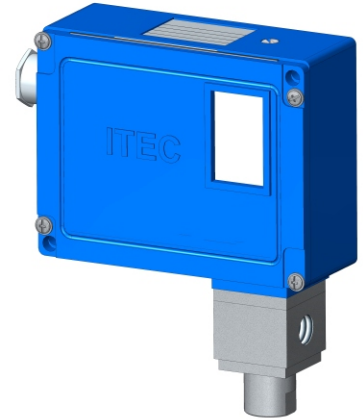
FEATURES

- Fix / adjustable differential
- Field adjustable set point
- Weatherproof to IP 67
- Internal set point lock
- Rigid construction
- Scale provided

APPLICATION

- Marine applications
- Textile machineries
- Power & steel plants
- Furnace applications
- Oil & Gas, Refineries
- Petro-chemicals & Fertilizers
- Cement & Glass industries
- Railway engines & Turbines

HP / LP port



STANDARD SPECIFICATIONS

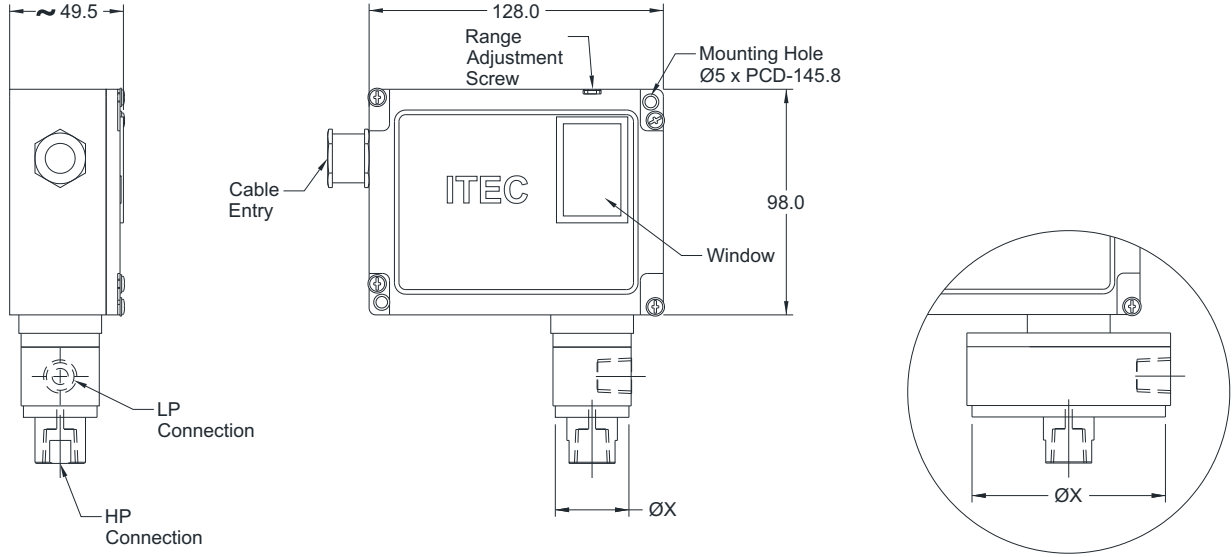
Repeatability	:	± 0.5 % F.S
Scale accuracy	:	± 1% F.S
Measurement unit	:	bar
Range	:	Refer "Range Table"
Range adjustment	:	External (Standard), Internal (Optional)
Differential	:	Fixed (Standard), Adjustable (Optional)
Mounting	:	Bottom / Panel
Enclosure material	:	Aluminum pressure die cast
Sensing elements	:	SS 316 Diaphragm
Switch	:	1 SPDT Snap action micro switch
Switch rating	:	15A,250 VAC / 0.2A,24 VDC (Standard)
Process connection	:	1/4"BSP(F) x 2 Nos.
Maximum process temperature	:	150 °C
Ambient temperature	:	-10...60 °C
Cable entry	:	PG.13.5 mm
Set point	:	Between 20 to 80 % F.S for better performance
High voltage strength	:	0.5 to 0.6 KV between open contacts and 2 K V between contact and body

RANGE TABLE

CODE	RANGE "mbar"	CODE	RANGE "bar"
D17	5...60	B02	0.1...1
D19	10...100	B04	0.2...2
D24	25...250	B06	0...4
D29	50...600	B07	0.6...6
		B09	1...10
		B11	1...16
		B13	2...25

DIMENSIONAL DRAWING

S1 External Range Setting



All dimensions are in mm

Chamber Size	
Range	ØX
5 mbar to 600 mbar	80 mm
1 bar to 25 bar	45 mm

MICROSWITCH SPECIFICATION

DESCRIPTION	RATING	RATING	DIFFERENTIAL	TYPE	SWITCH CODE	
	AC	DC			1 No.	2 Nos.
Low deadband / differential	15A/250V, 2A/24V 0.2A/220V	15A/250V, 2A/24V 0.2A/220V	Fix	SPDT	M10	M20
High dead band / differential	15A/250V, 6A/24V 0.25A/220V	15A/250V, 5A/24V 0.03A/220V	Fix / Adjustable	SPDT	M11	M21
Gold plated switch	1A/250V	0.5A/28V	Fix	SPDT	M13	M23
Environmentally sealed silver contact	5A/28V	-	Fix	SPDT	M14	M24
Hermetically sealed silver contact	3A/28V	2A/24V	Fix	SPDT	M16	M26
Hermetically sealed gold contact	1A/125V	-	Fix	SPDT	M17	M27
High DC rating	10A/125V	6A/125V	Fix / Adjustable	SPDT	M18	M28
DPDT	10A/125V, 0.2A/250V	-	Fix / Adjustable	DPDT	M08	-

ORDERING CODES

1. RANGE		B02	8. CABLE ENTRY		J8
Refer "Range Table"			J8	PG 13.5 cable entry	
2. CHAMBER MATERIAL		NF	J9	DIN connector	
NF	AISI 316 SS		C0	3/4" ET (F), 1 No.	
NN	Monel K-500		C1	1/2" NPT (F), 1 No.	
NO	Hastelloy C-276		C4	4 Pin Connector	
3. SENSING ELEMENT MATERIAL		DF	C7	7 Pin Connector	
DF	AISI 316 SS		9. PROCESS CONNECTION		
DN	Monel K-500		02B	02B	1/4" BSP (F) Standard
DO	Hastelloy C-276			12B	1/4" BSP (M)
D2	PTFE (Teflon)			13B	3/8" BSP (M)
4. RANGE ADJUSTMENTS		S1		14B	1/2" BSP (M)
S1	Range adjustments, External			02N	1/4" NPT (F)
5. SWITCHING DIFFERENTIAL		S4	12N	1/4" NPT (M)	
S4	Fixed, 2...5%		14N	1/2" NPT (M)	
S5	Adjustable, 5...12.5%		04N	1/2" NPT (F)	
6. SET POINT		S8	A25	1.5" RF 150#	
S8	On Raising		A26	1.5" RF 300#	
S9	On Falling		A27	1.5" RF 600#	
7. MICROSWITCH TYPE		M10	A31	2" RF 150#	
Refer "Microswitch Specification"			A32	2" RF 300#	
			A33	2" RF 600#	
			10. OTHER OPTIONS		
			TB	Calibration Certificate	
			XF	AISI 304 SS tag plate	
			XV	Wall mounting bracket	
			XS	Mounting bracket with 2" U-clamp	
			TC	Material test certificate 3.1	
			KE	Cable gland, double compression weatherproof, Ni-plated brass	
				XX	

Ordering Example : S202-B02-NF-DF-S1-S4-S8-M10-J8-02B
COMPATIBLE ACCESSORIES

Diaphragm seal	Gauge cock	Needle Valves
Cooling tower	Snubber	Manifolds
Siphon		

NOTES:

1. Except "Standard" connection, other connections are given through adaptors.
2. The option "TC" covers only wetted parts.
3. Cable gland is available in other materials, contact factory.